

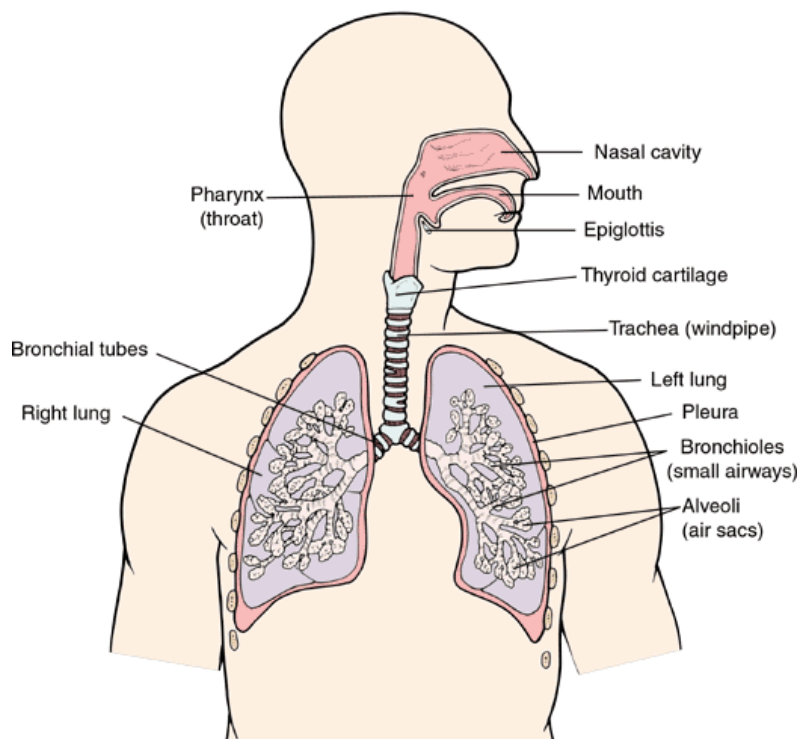
The Respiratory System

Outside air goes into the body and passes through several structures before it reaches air sacs in the lungs. Follow the path of air into the lungs.

1. Air enters the body through the **mouth** or **nose**. The nose is the preferred entrance because it has cilia, or hair, to filter the air.

2. The air moves to the throat in an area called the **pharynx**. The pharynx connects the mouth to trachea.

Respiratory System



3. The **trachea** is also called the windpipe. It is a tube that is supported by rings of cartilage.

4. The trachea ends two branches that enter the left and right lung called **bronchi**.

5. Bronchi turns into smaller airway passages called **bronchioles**.

Copyright © 2005 McKesson Health Solutions, LLC. All Rights Reserved.

6. Bronchioles end in sac-like structures called **alveoli**. Oxygen is transferred to the blood and carbon dioxide passes out of the blood in the alveoli.

7. The **diaphragm** is a muscle that expands and contracts to expand the ribcage during the process of breathing.